

GMS Shamal is a self-propelled jackup barge that provides the stable platform for the delivery of a wide range of services throughout the total lifecycle of offshore oil, gas and renewable energy activities.

Key advantages of GMS Shamal over conventional barges include:

- **Independent:** Dynamic Positioning (DP2) allows the vessel to move under her own power with high accuracy positioning alongside a platform.
- **Fast:** The vessel can move faster than conventional jackups between locations due to higher transit speeds of six knots and by not requiring anchor deployment.
- **Flexible:** GMS is both builder and operator and can adapt/configure the vessel to clients' requirements, with the vessel able to move easily between oil and gas operations to wind farm installation and maintenance contracts.
- **Safe:** Day-to-day work is free from the added hazards a moving vessel introduces. A safer working environment for large numbers of offshore workers.
- **Comfortable:** The four-legged design provides a stable platform for those living on board; the efficiency of a man well-rested in a stable bed is greater than someone trying to sleep on a moving vessel (for crew and non-seafarers).
- **Convenient:** Two gangways installed in combined operations provide an effective solution for top side maintenance on a smaller platform.
- **Cost effective:** The weather window for a conventional jackup barge to move in-field is an average of three days; GMS Shamal can do it in a few hours. No need for tug support/anchor handling. Fuel-efficient.

Main Particulars		Propulsion and Generators	
LOA	56 m	Generator Sets	4 x 1380 kW
Beam	32 m	Emergency Generator	1 x 400 kW
Depth	5.5 m	Azimuth Thrusters	2 FWD + 2 AFT
Draft	3.5 m	Speed	6 Knots
Variable Load	1245 t	Kongsberg Dynamic Positioning	DP2
Deck Area	800 m²		

Accommodation		Deck Machinery	
Single Cabins	4	Main Crane	150 t @ 15 m
Two Berth Cabins	9	Auxiliary Crane	15 t @ 25 m
Four Berth Cabins	32	Deck Strength	5 t / m ²
Total POB	150		
Hospital			
Offices			
Conference Room			

Jacking System		Leg Design	
Jacking Units per leg	12	Legs	4x Triangular Truss Design
Jacking Speed	0.8m / min	Leg length	75 m
Effective lifting capacity per leg	1080 t	Max Water Depth	55 m
Pre-Load holding capacity per leg	1800 t	Spudcans	30m² each

Safety Equipment		Helideck	
Lifeboats	2 x 150 man	D Value	22.2 m
Life rafts	12 x 25 man	Aircraft	S61N + S92
Rescue boat	6 persons		

Gulf Marine Services

UAE	UK	Commercial	Operations
Gulf Marine Services Mussafah Base P.O. Box 46046 Abu Dhabi, United Arab Emirates Ph: +971 2 5028888; Fax: +971 2 5553421 Email: gmsmena@gmsuae.com	Gulf Marine Services 36 Abercrombie Court, Prospect Road Arncliffe Business Park, Westhill, Scotland AB32 6FE, United Kingdom Ph: +44 (0) 1224 737200; Fax: +44 (0) 1224 737239 Email: gmsuk@gmsuae.com	Mr. Mark Preston Commercial Director Ph: +971 2 5028810 Email: chartering@gmsuae.com	Mr. Simon Cook Chief Operating Officer Ph: +971 2 5028753 Email: operations@gmsuae.com

Specifications provided in good faith but without guarantee and are subjected to change without prior notice.

www.gmsuae.com



GMS SHAMAL 5601

SELF-PROPELLED SELF-ELEVATING ACCOMMODATION JACKUP BARGE



Operator

Gulf Marine Services

Builders

Gulf Marine Services Abu Dhabi

Class

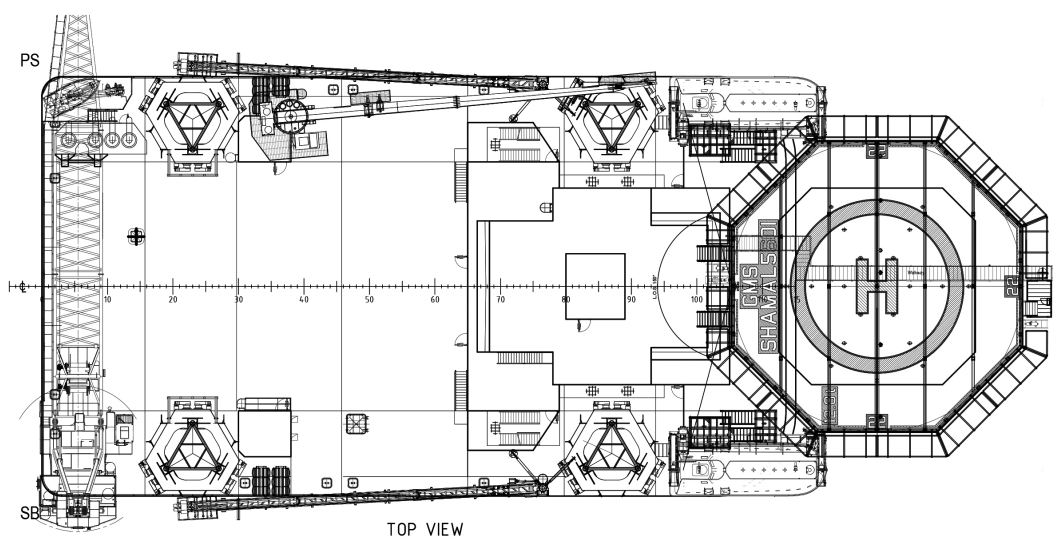
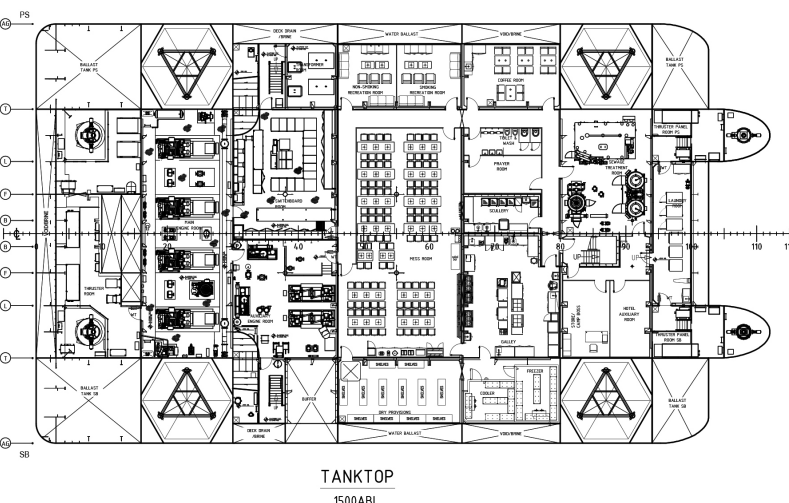
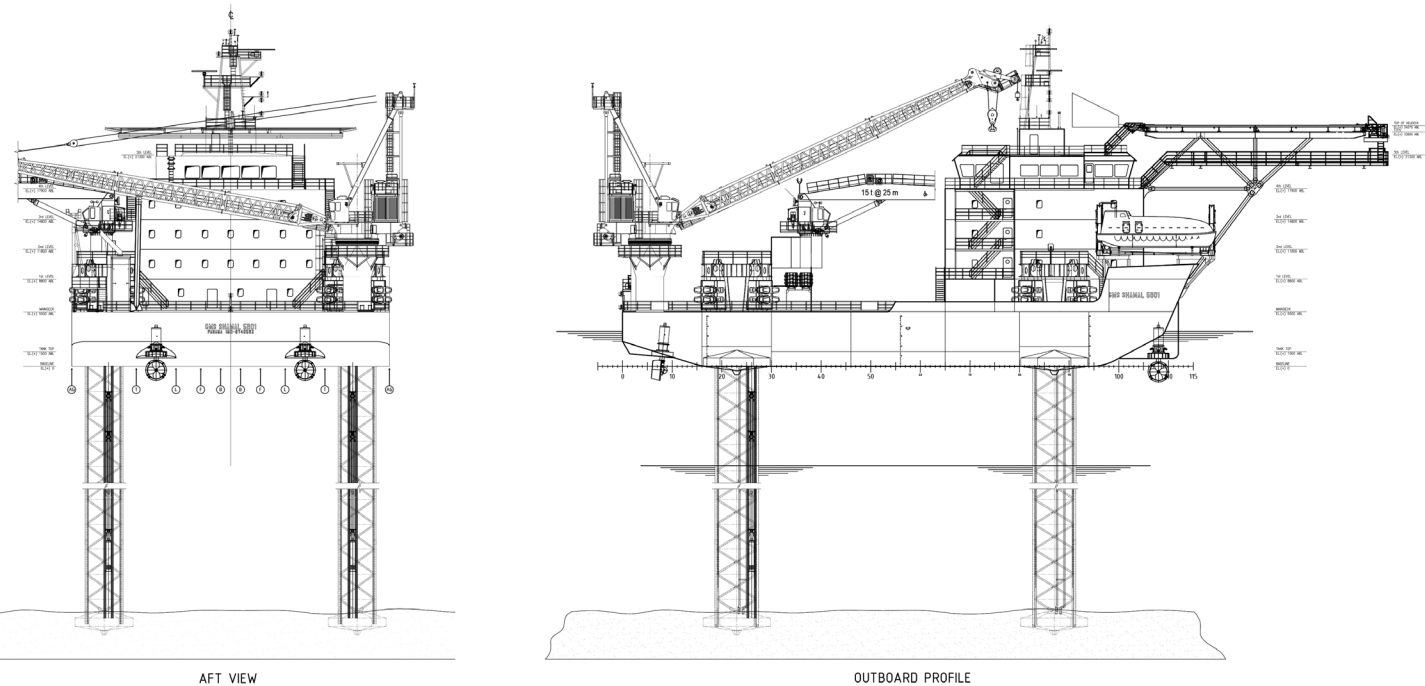
A1, Self-Elevating Unit + AMS + ACCU + DP2

Delivery

2015



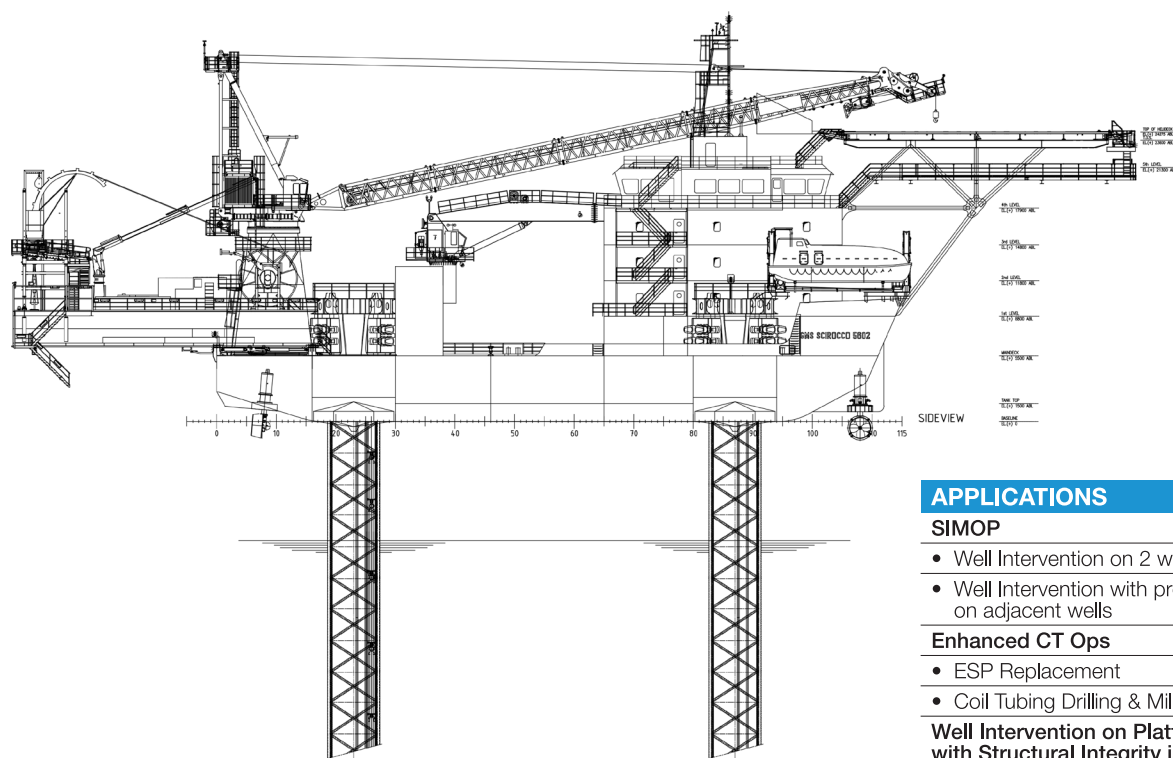
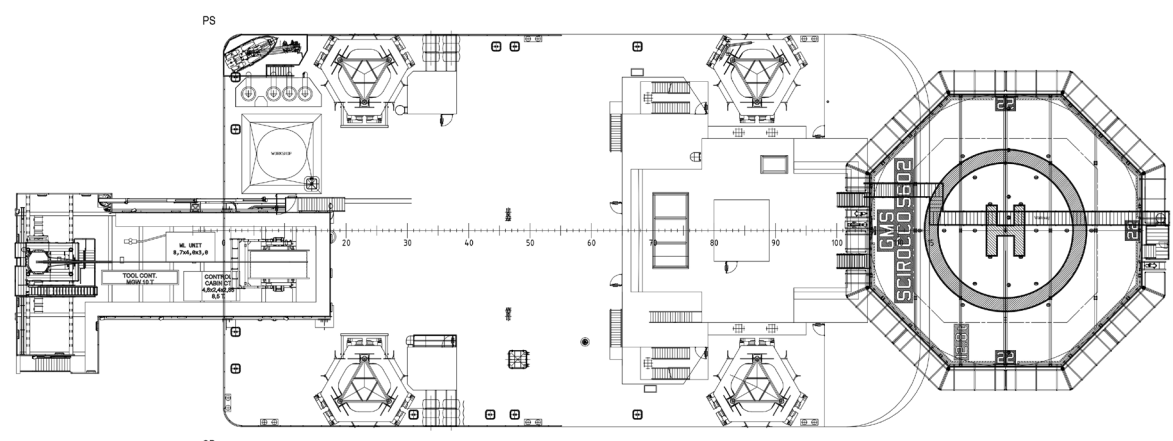
GMS SHAMAL 5601



SELF-PROPELLED SELF-ELEVATING ACCOMMODATION JACKUP BARGE

CANTILEVER OPTION

Description	Imperial	Metric
Cantilever Main Skidding Range	49 ft	15 m
Transverse Skidding (Skid Frame)	26 ft	8 m
Length of Cantilever	89 ft	27 m
Width of Cantilever	28 ft	8,5 m
Height of Cantilever: External/Internal	11.5 ft / 9.8 ft	3.5 m / 3 m
Load Capacities		
CT Reel/ Power Stand	220 KLbs	100 t
Cantilever Mid/ Lay down Area	88 KLbs	40 t
Work Deck Area/ Well Access	220 KLbs	100 t



- APPLICATIONS
- SIMOP
- Well Intervention on 2 well
 - Well Intervention with production on adjacent wells
- Enhanced CT Ops
- ESP Replacement
 - Coil Tubing Drilling & Milling
- Well Intervention on Platforms with Structural Integrity issues