

GMS Scirocco is a self-propelled jackup barge that provides stable platform for the delivery of a wide range of services throughout the total lifecycle of offshore oil, gas and renewable energy activities.

Key advantages of GMS Scirocco over conventional barges include:

- **Independent:** Dynamic Positioning (DP2) allows the vessel to move under her own power with high accuracy positioning alongside a platform.
- **Fast:** The vessel can move faster than conventional jackups between locations due to higher transit speeds of six knots and by not requiring anchor deployment.
- **Flexible:** GMS is both builder and operator and can adapt/ configure the vessel to clients' requirements, with the vessel able to move easily between oil and gas operations to wind farm installation and maintenance contracts.
- **Safe:** Day-to-day work is free from the added hazards a moving vessel introduces. A safer working environment for large numbers of offshore workers.
- **Comfortable:** The four-legged design provides a stable platform for those living on board; the efficiency of a man well-rested in a stable bed is greater than someone trying to sleep on a moving vessel (for crew and non-seafarers).
- **Convenient:** Two gangways installed in combined operations provide an effective solution for top side maintenance on a smaller platform.
- **Cost effective:** The weather window for a conventional jackup barge to move in-field is an average of three days; GMS Scirocco can do it in a few hours. No need for tug support/anchor handling. Fuel-efficient.

Main Particulars

LOA	56 m
Beam	32 m
Depth	5.5 m
Draft	3.6 m
Variable Load	905 to 1555 t
Deck Area	800 m ²

Propulsion and Generators

Generator Sets	4 x 1380 kW
Emergency Generator	1 x 400 kW
Azimuth Thrusters	2 FWD + 2 AFT
Speed	7 Knots
Kongsberg Dynamic Positioning	DP2

Accommodation

Single Cabins	4
Two Berth Cabins	9
Four Berth Cabins	32
Total POB	150
(* 6 additional 4 man cabins at main deck level can be allocated as per Client's requirement as offices or Cabins, always within max POB 150)	
Hospital	1
Offices	3

Deck Machinery

Main Crane	150 t @ 15 m
Auxiliary Crane	15 t @ 25 m
Deck Strength	5 t / m ²

Jacking System

Jacking Units per leg	12
Jacking Speed	0.8m / min
Effective lifting capacity per leg	1080 t
Pre-Load holding capacity per leg	1800 t

Leg Design

Legs	4x Triangular Truss Design
Leg length	75 m
Max Water Depth	55 m
Spudcans	30m ² each

Jacking System

Lifeboats	2 x 150 man
-----------	-------------

Helideck

D Value	22.2 m
Aircraft	S6IN + S92

Gulf Marine Services



UAE	UK	Commercial	Operations
Mussafah Base P.O. Box 46046 Abu Dhabi, United Arab Emirates Ph: +971 2 5028888; Fax: +971 2 5553421 Email: gmsmena@gmsuae.com	36 Abercrombie Court, Prospect Road Arnhall Business Park, Westhill, Scotland AB32 6FE, United Kingdom Ph: +44 (0) 1224 737200; Fax: +44 (0) 1224 737239 Email: gmsuk@gmsuae.com	Mr. Mark Preston Commercial Director Ph: +971 2 5028810 Email: chartering@gmsuae.com	Mr. Simon Cook Chief Operating Officer h: +971 2 5028740 Email: operations@gmsuae.com

Specifications provided in good faith but without guarantee and are subjected to change without prior notice.

www.gmsuae.com



GMS SCIROCCO 5602

SELF-PROPELLED SELF-ELEVATING ACCOMMODATION JACKUP BARGE



Operator

Gulf Marine Services

Class

A1, Self-Elevating Unit + AMS + ACCU + DP2 + CRC

Builders

Gulf Marine Services Abu Dhabi

Delivery

2015

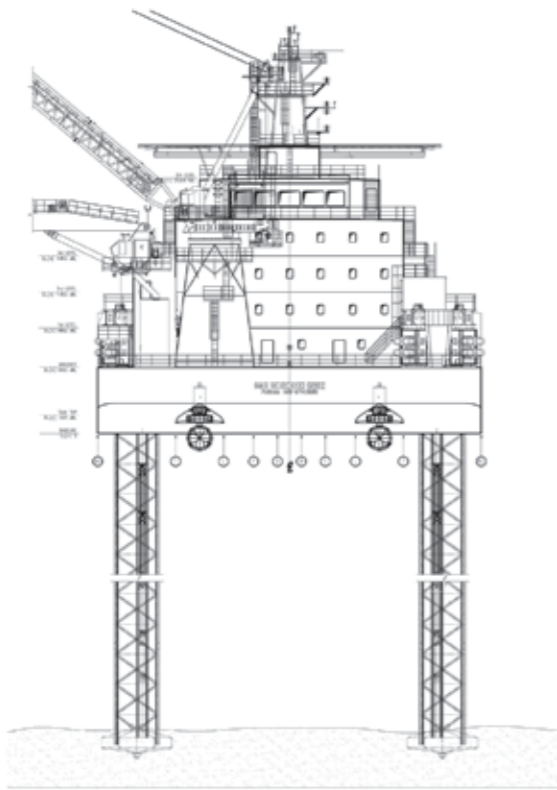


Specifications provided in good faith but without guarantee and are subjected to change without prior notice.

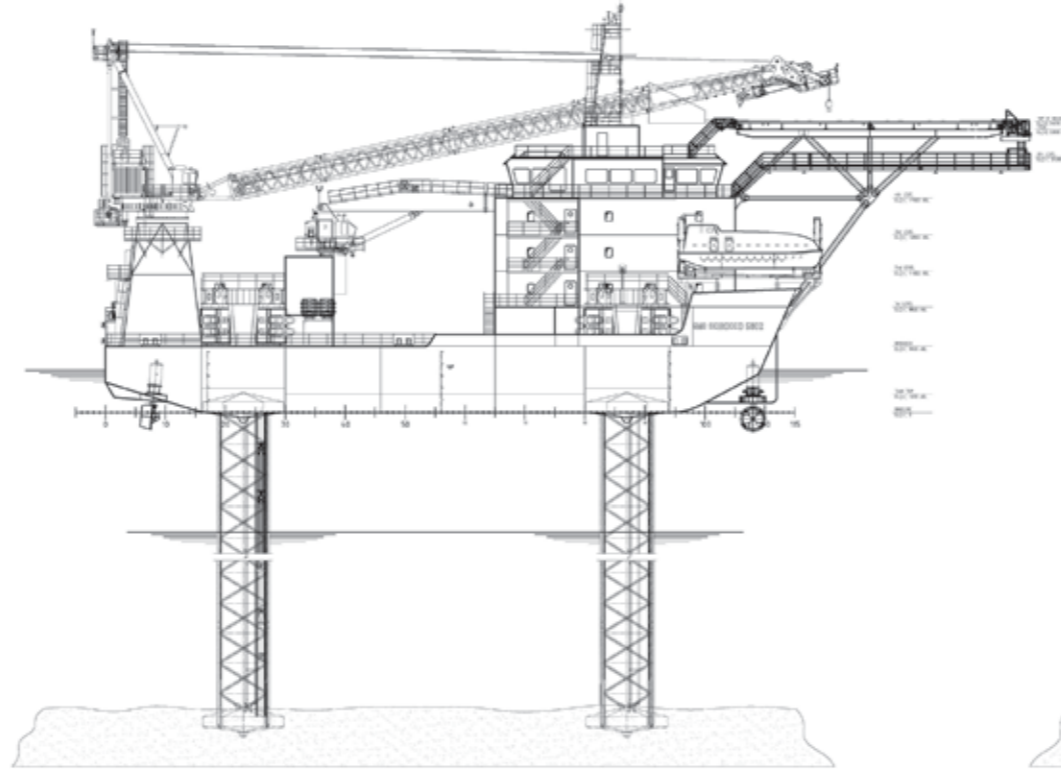
www.gmsuae.com

GMS SCIROCCO 5602

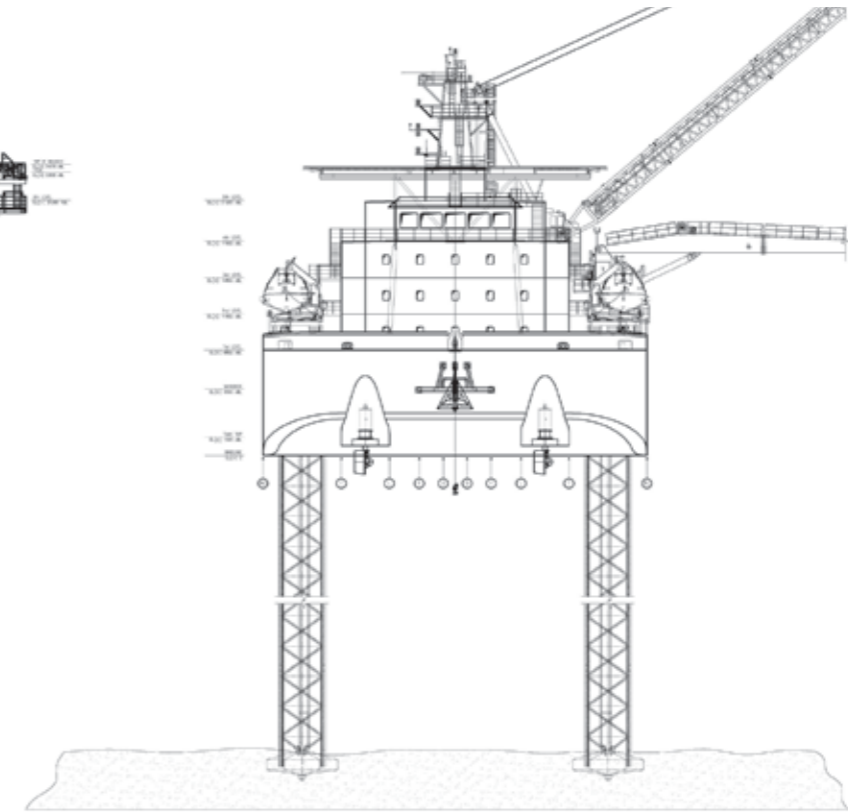
SELF-PROPELLED SELF-ELEVATING ACCOMMODATION JACKUP BARGE



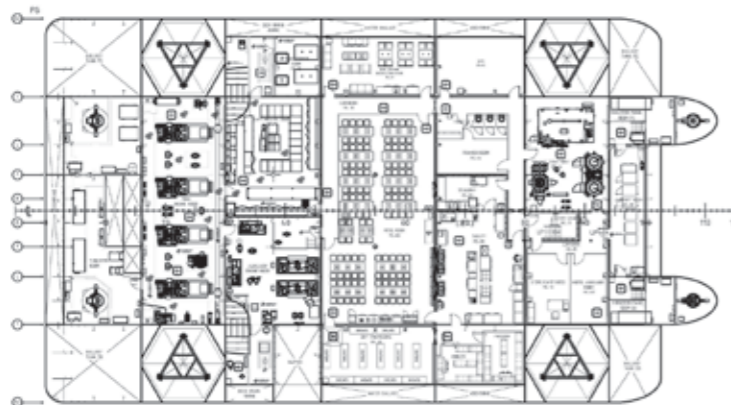
AFT VIEW



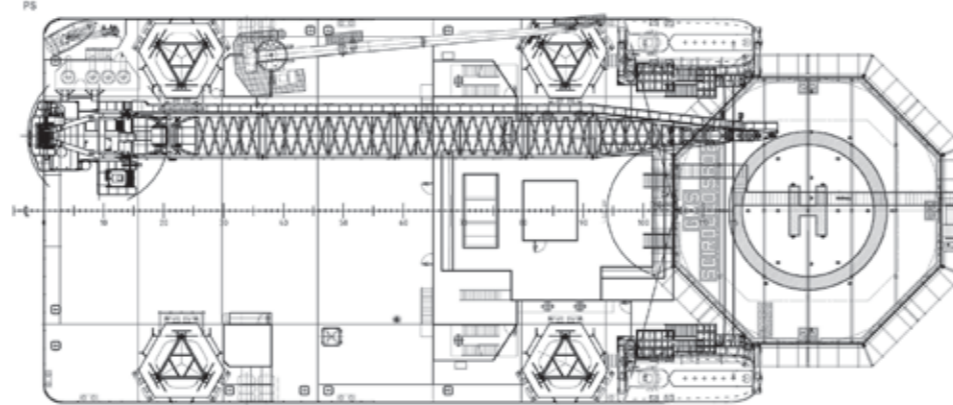
OUTBOARD PROFILE



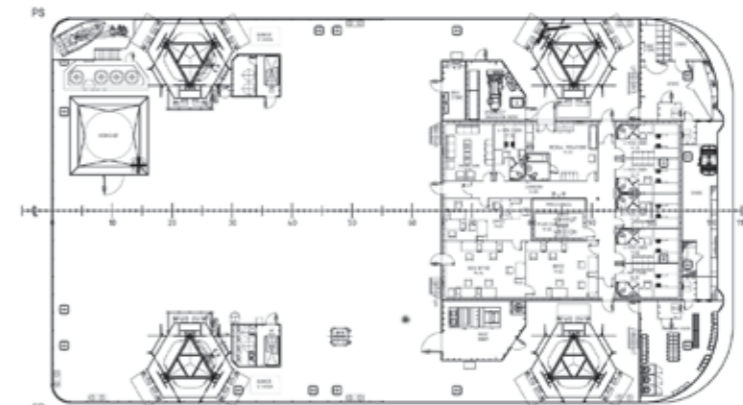
FWD VIEW



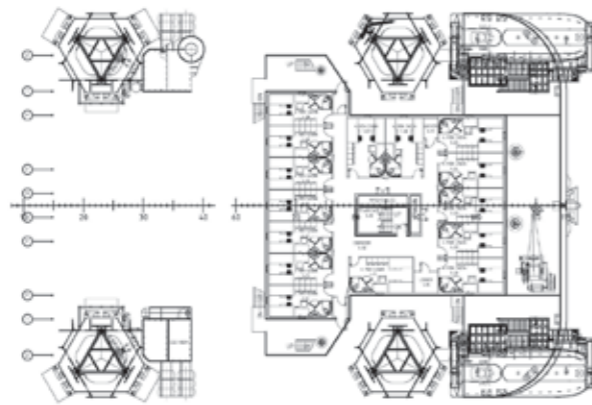
TANKTOP
1500ABL



TOP VIEW

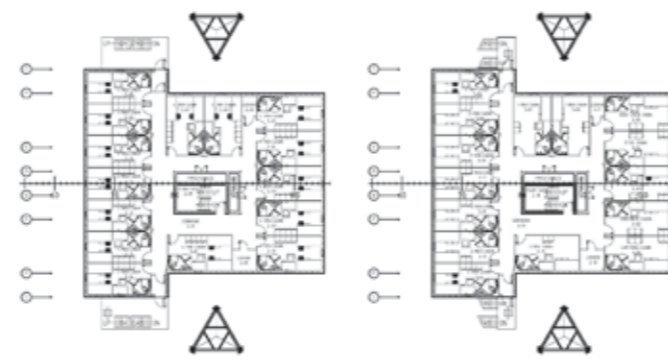


MAINDECK
5500ABL



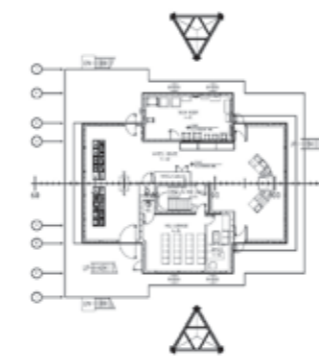
10000 ABL

1ST LEVEL
8900ABL
69 PERSONS

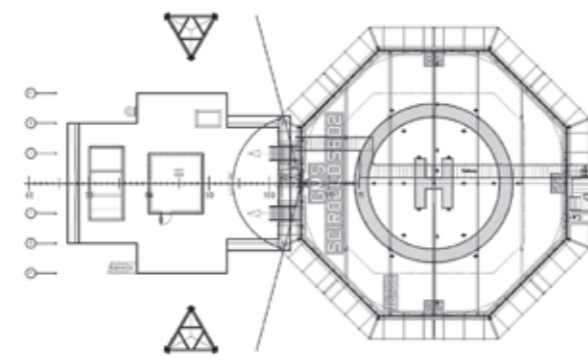


2ND LEVEL
1800ABL
60 PERSONS

3RD LEVEL
14000ABL
39 PERSONS



4TH LEVEL
17000ABL



5TH LEVEL
21000ABL